

Allegato 2b-Logistica Gramsci

a.s. 2022-2023

TABELLA ORARI INGRESSO-USCITA, INTERVALLI E MENSA GRAMSCI A.S.2022-2023					NO COVID
CLASSE	ORARIO INGRESSO CANCELLO GRANDE Via Paperia 11	INTERVALLO MATTINA	MENSA	INTERVALLO POMERIGGIO	ORARIO INGRESSO CANCELLO GRANDE Via Paperia 11
1A	8.25/8.30	10.00-10.30	12.00-12.30 Refettorio 1	12.30-14.00	16.30
2A	8.25/8.30	10.00-10.30	12.00-12.30 Refettorio 2	12.30-14.00	16.30
3A	8.25/8.30	10.30-11.00	12.45 -13.15 Refettorio 1	13.15-14.45	16.30
4A	8.25/8.30	10.30-11.00	12.45 -13.15 Refettorio 2	13.15-14.45	16.30
					Venerdì 12.30
5A	8.25/8.30	11.00-11.30	13:30-14.00 Refettorio 1	12.30-13.30 13.30-14.00	16.30
					Venerdì 12.30
5B	8.25/8.30	11.00-11.30	13:30-14.00 Refettorio 2	12.30-13.30 14:00-14.30	16.30
					Venerdì 12.30

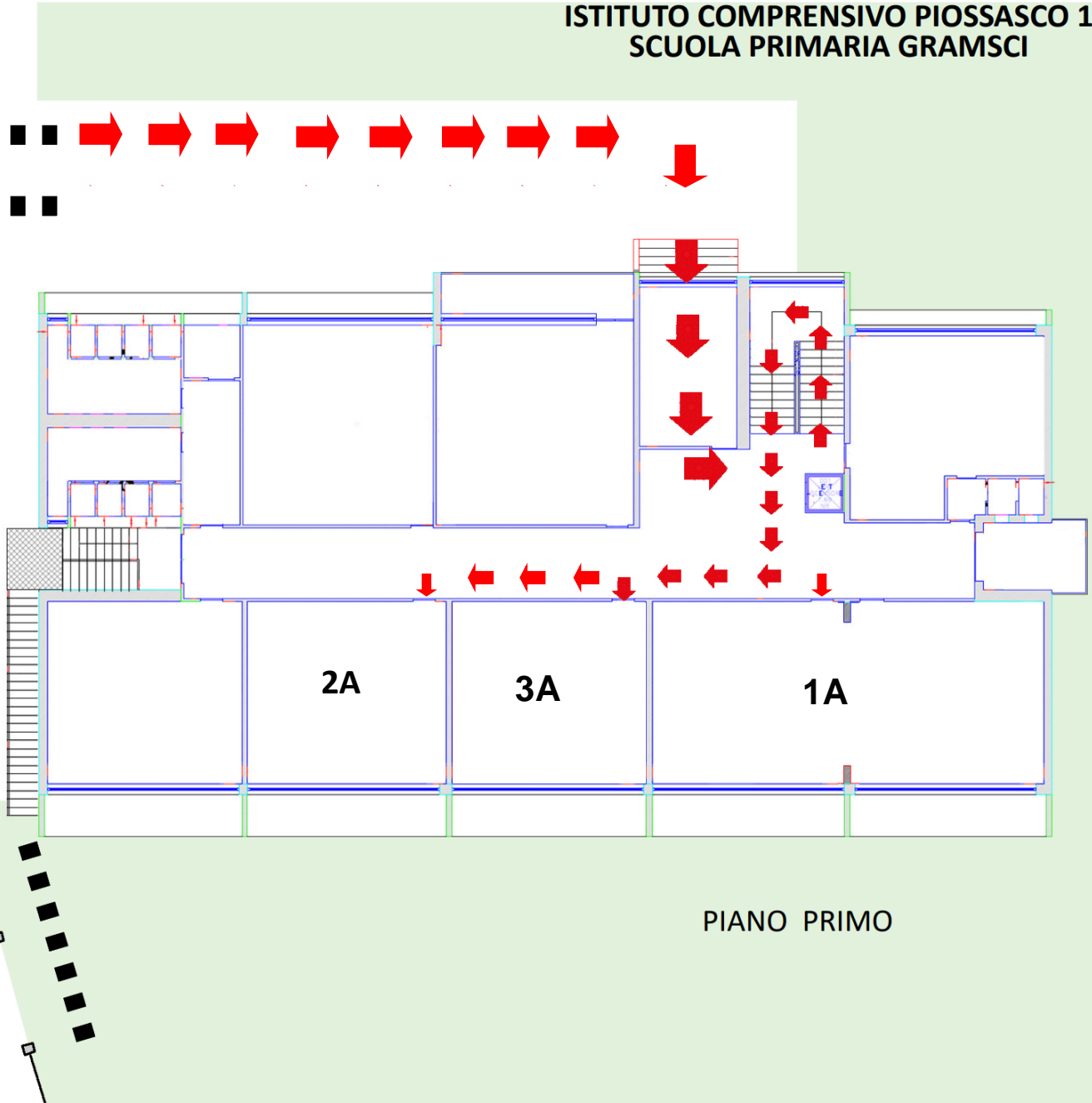
**ISTITUTO COMPRENSIVO PIOSSASCO 1
SCUOLA PRIMARIA GRAMSCI**

cancello grande
via Paperia 11
lato destro

Classi 2A 3A 1A
Ingresso/uscita
cancello grande
Ore 8:25-8:30

cancello piccolo via Paperia 11

cancello
via Paperia 13
(lato parco giochi)



PIANO PRIMO

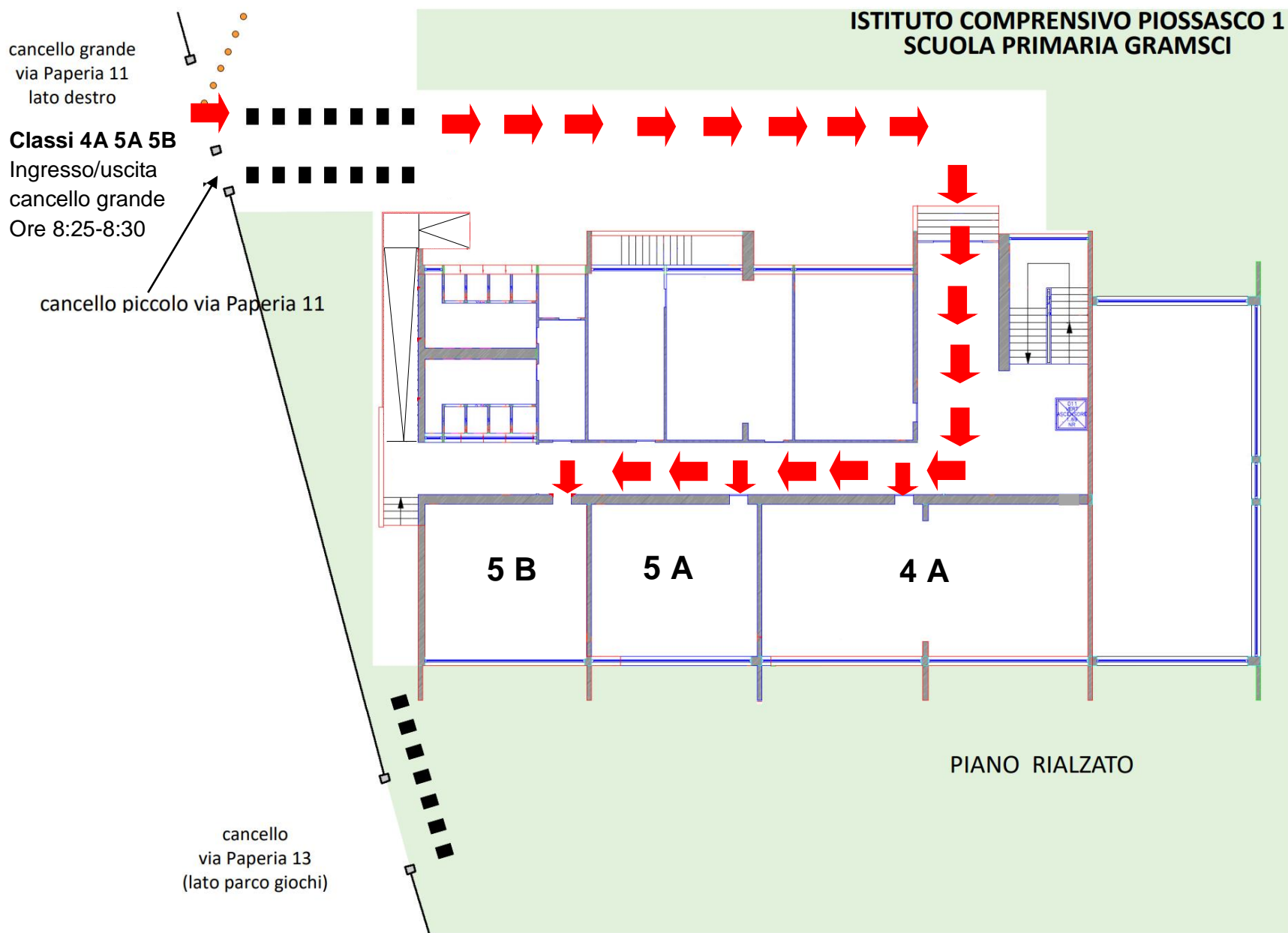
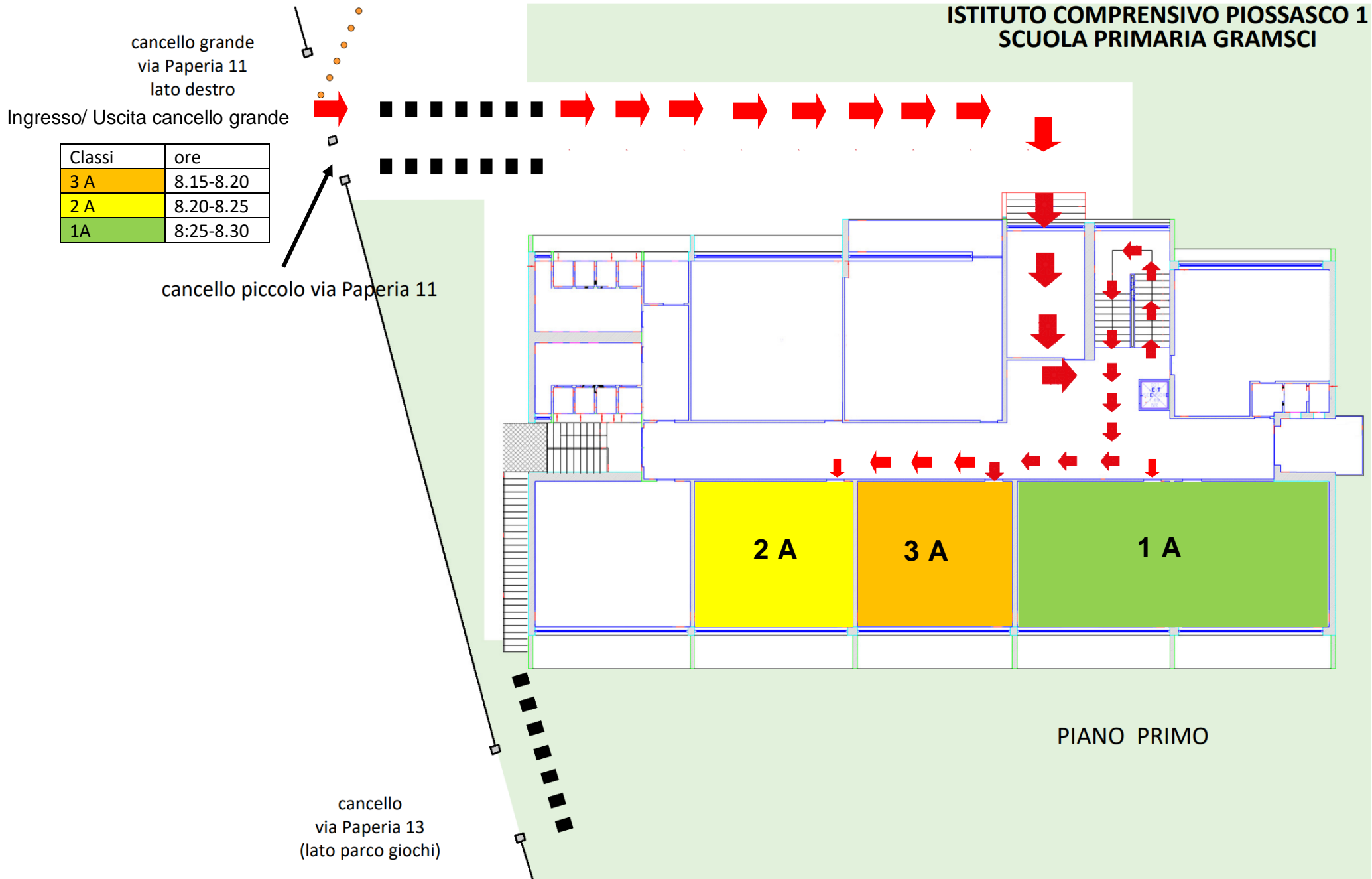
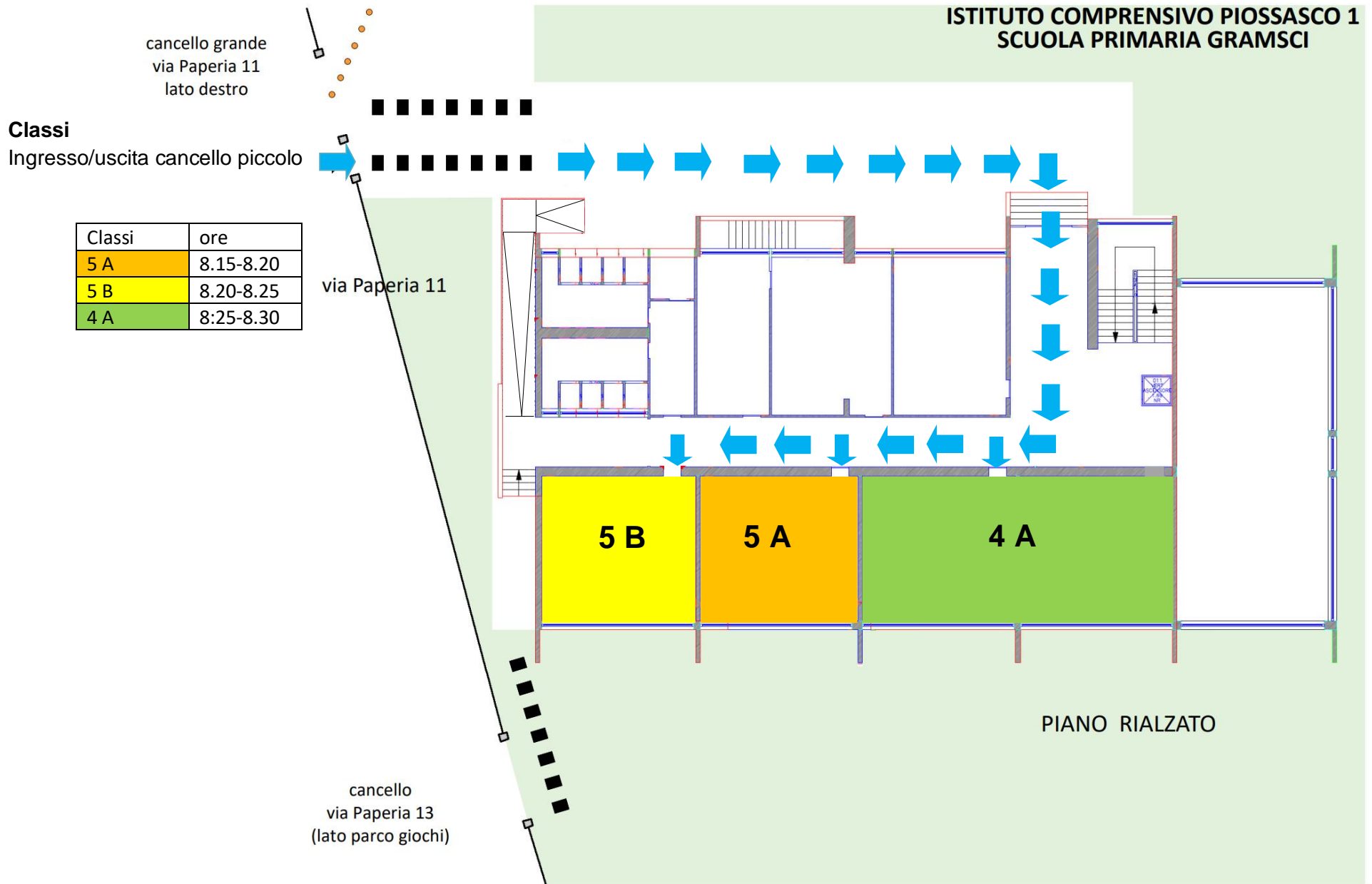


TABELLA ORARI INGRESSO-USCITA, INTERVALLI E MENSA GRAMSCI A.S.2022-2023					COVID
CLASSE	ORARIO INGRESSO CANCELLO GRANDE Via Paperia 11	INTERVALLO MATTINA	MENSA	INTERVALLO POMERIGGIO	ORARIO INGRESSO CANCELLO GRANDE Via Paperia 11
1A	8.25/8.30	10.00-10.30	12.00-12.30 Refettorio 1	12.30-14.00	16.30
2A	8.20/8.25	10.00-10.30	12.00-12.30 Refettorio 2	12.30-14.00	16.25
3A	8.15/8.20	10.30-11.00	12.45 -13.15 Refettorio 1	13.00-14.30	16.20
CLASSE	ORARIO INGRESSO CANCELLO PICCOLO Via Paperia 11	INTERVALLO MATTINA	MENSA	INTERVALLO POMERIGGIO	ORARIO INGRESSO CANCELLO PICCOLO Via Paperia11
4A	8.25/8.30	10.30-11.00	12.45 -13.15 Refettorio 2	13.00-14.30	16.30 Venerdì 12.30
5A	8.15/8.20	11.00-11.30	13:30-14.00 Refettorio 1	12.30-13.30 13.30-14.00	16.20 Venerdì 12.20
5B	8.20/8.25	11.00-11.30	13:30-14.00 Refettorio 2	12.30-13.30 13.30-14.00	16.25 Venerdì 12.25

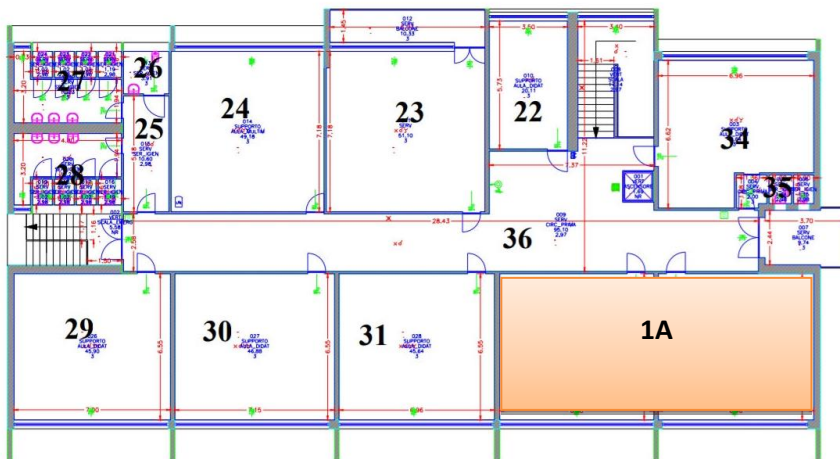
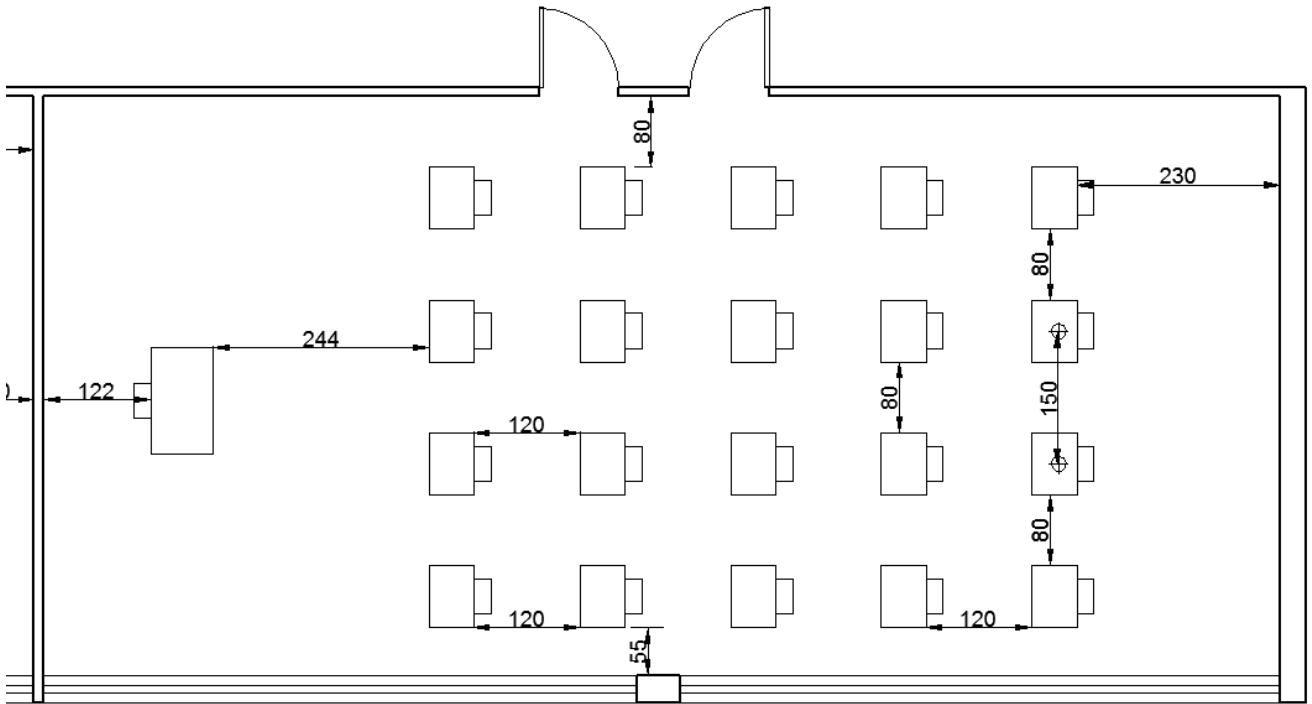
ISTITUTO COMPRENSIVO PIOSSASCO 1 SCUOLA PRIMARIA GRAMSCI





Aula A1+A2= 1A (20 alunni)

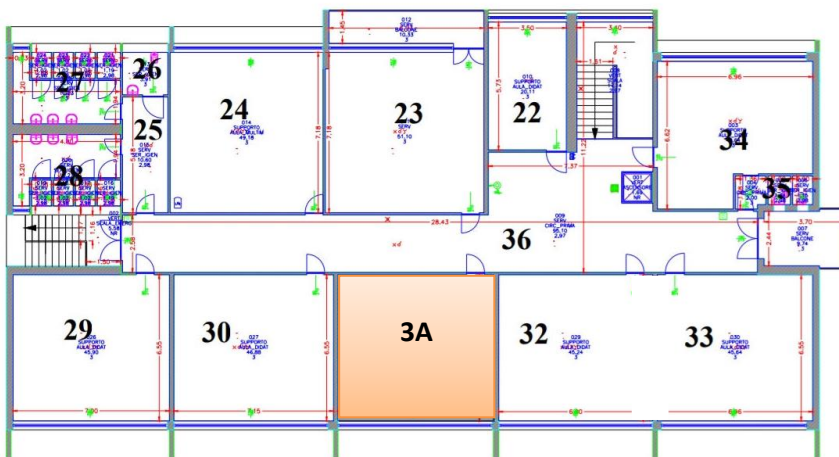
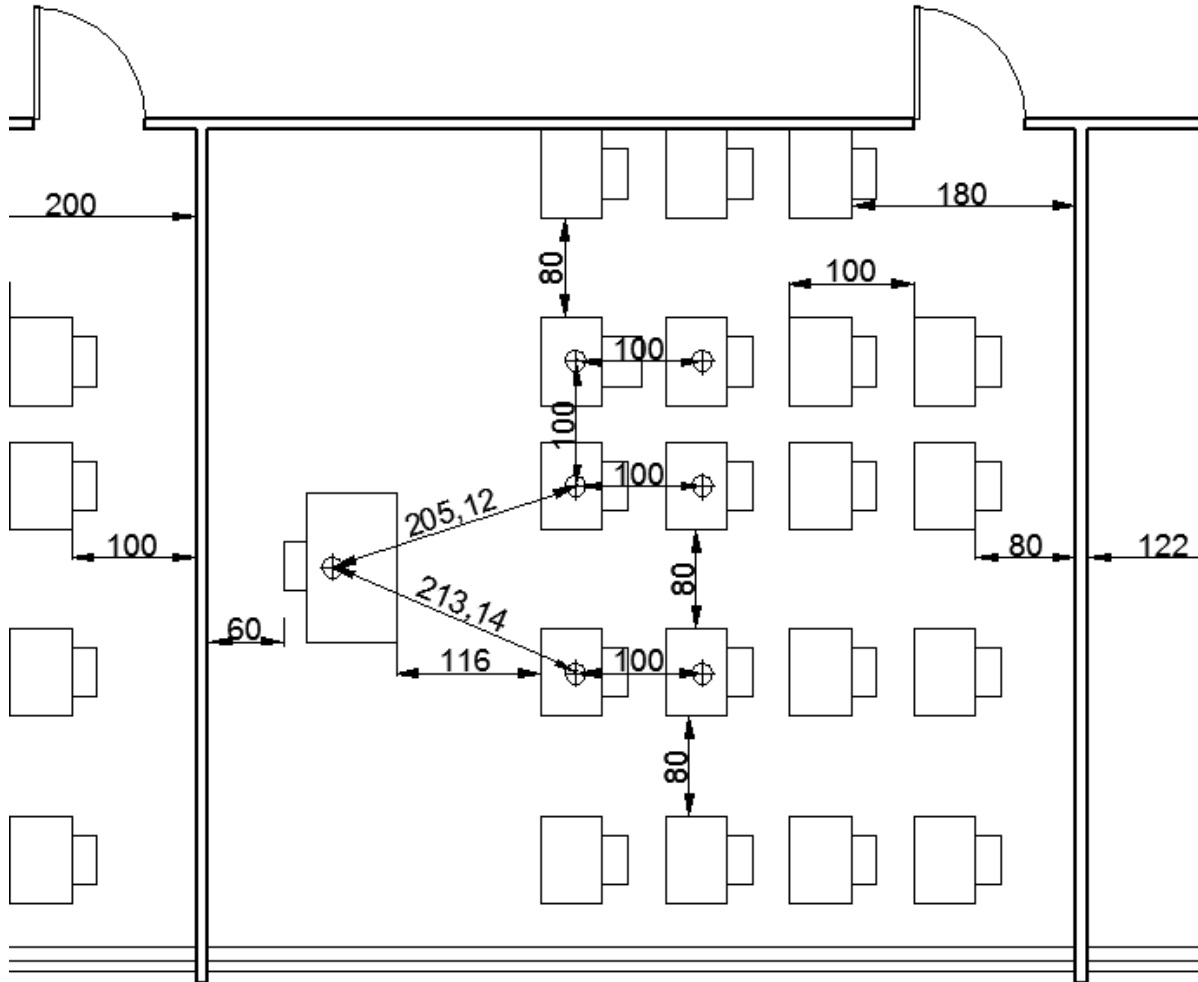
Ingresso / uscita cancello grande di via Paperia n° 11



SCUOLA PRIMARIA
GRAMSCI
Pianta dell'aula 1A
Piano primo

Aula A 3 = 3A (19 alunni)

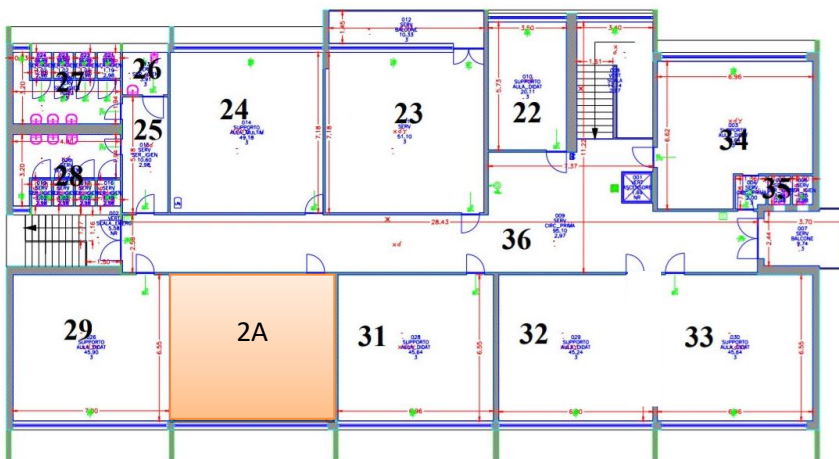
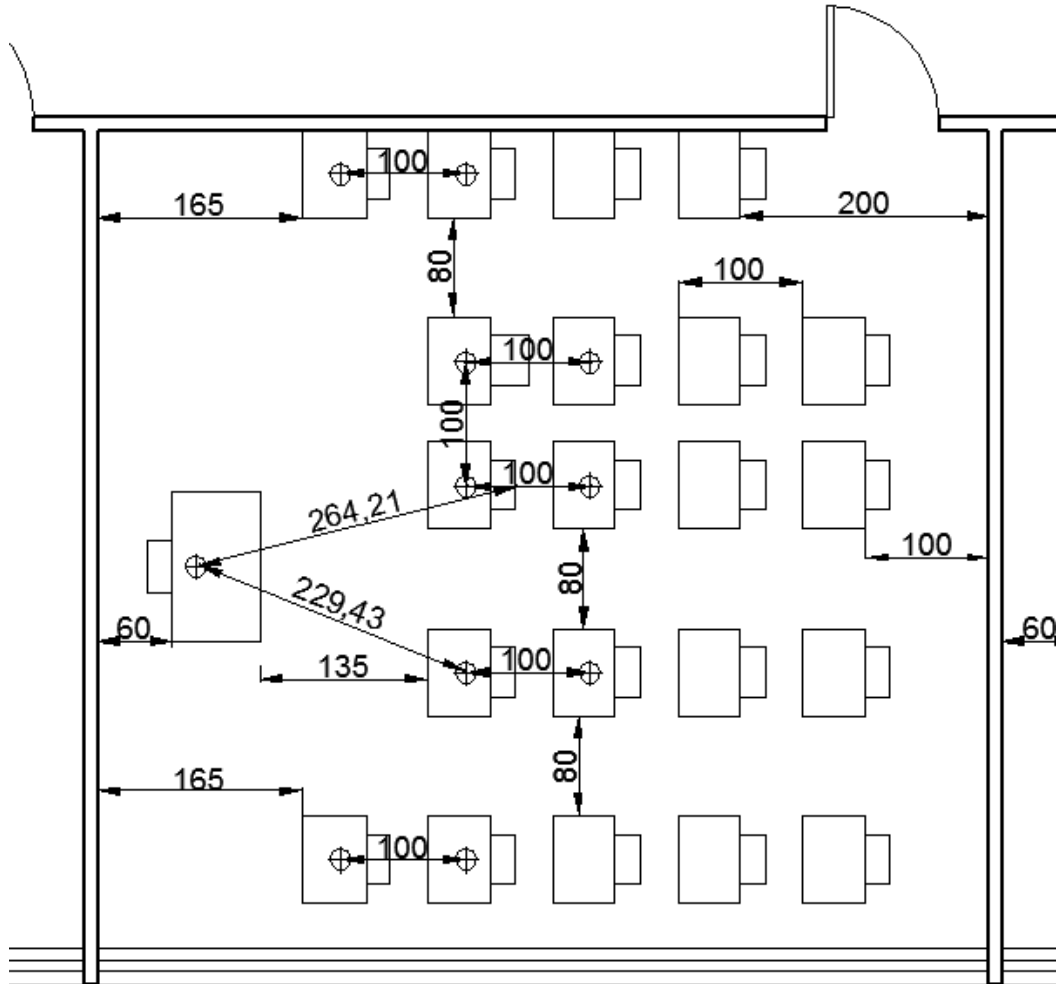
Ingresso / uscita cancello grande di via Paperia n°11



SCUOLA PRIMARIA
GRAMSCI
Pianta dell'aula 3A
Piano primo

Aula A 4= 2A (21 alunni)

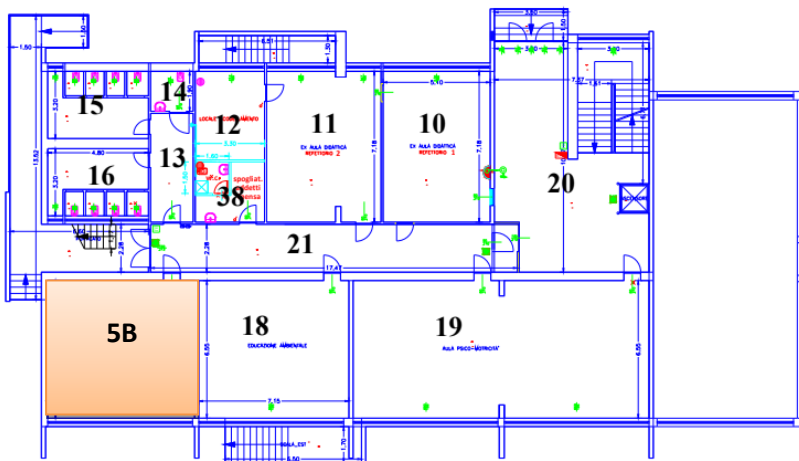
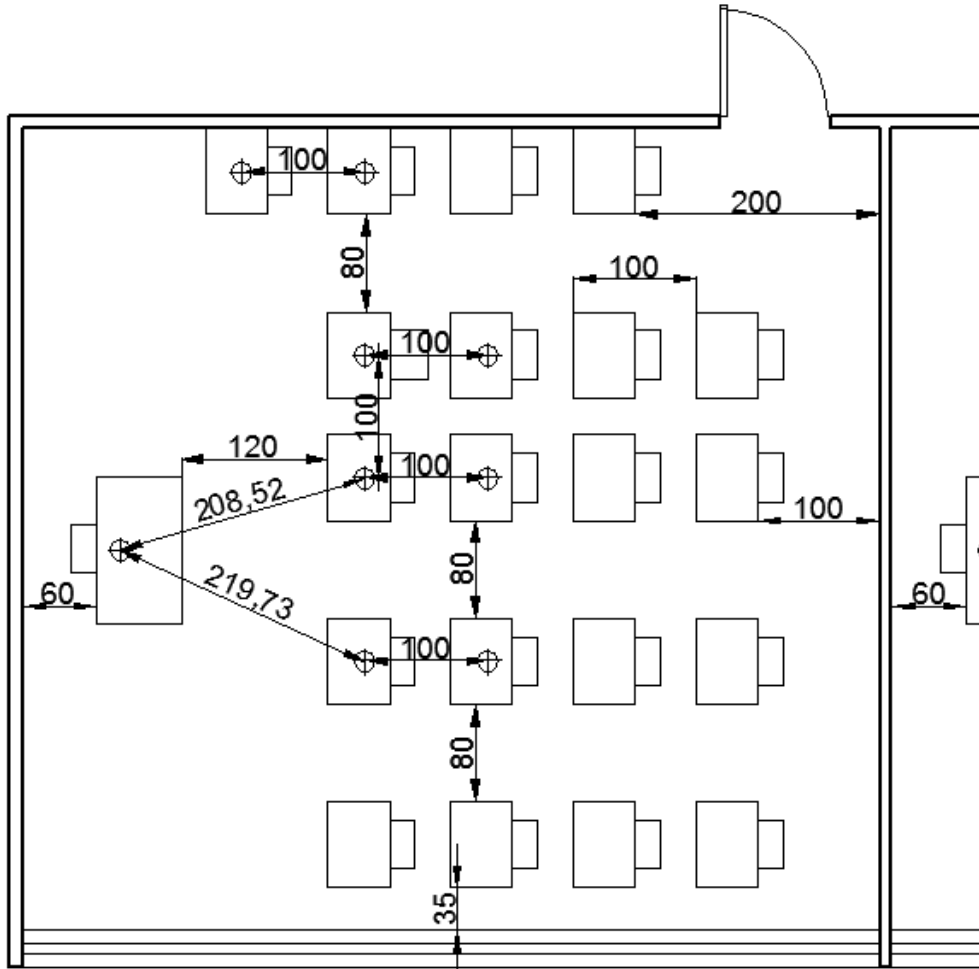
Ingresso / uscita cancello grande di via Paperia n°11



SCUOLA PRIMARIA
GRAMSCI
Pianta dell'aula 2A
Piano primo

Aula B3= 5B (20 alunni)

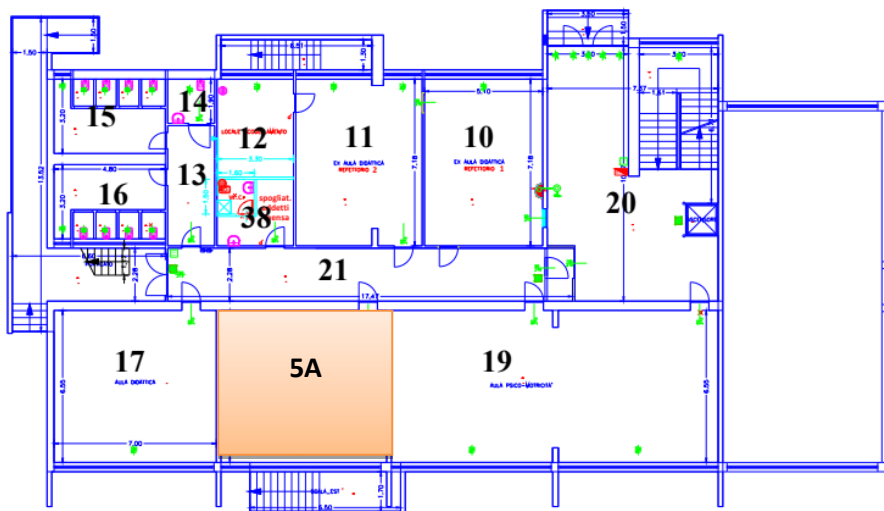
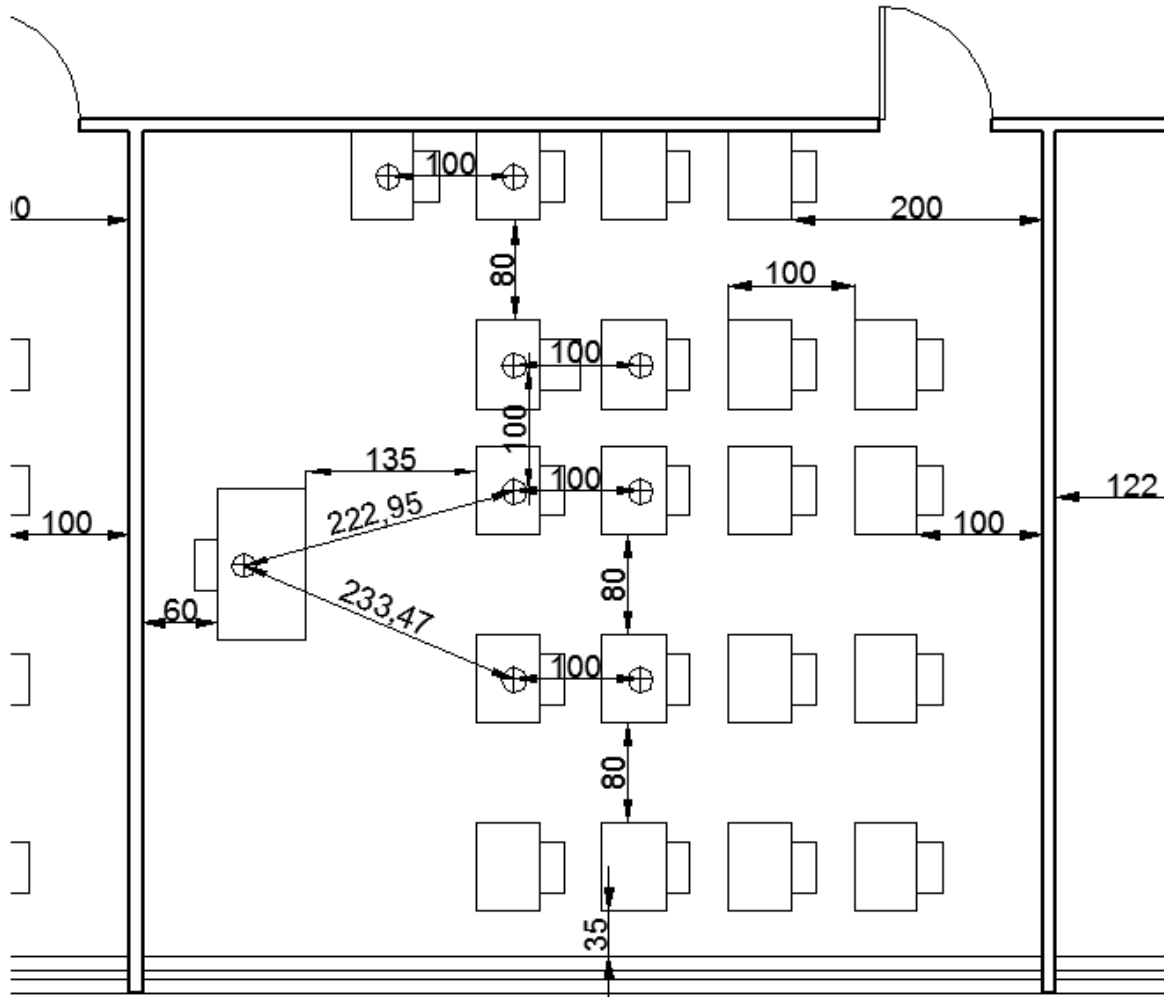
Ingresso / uscita cancello piccolo di via Paperia n°11



SCUOLA PRIMARIA
GRAMSCI
Pianta dell'aula 5B
Piano rialzato

Aula B2= 5A (20 alunni)

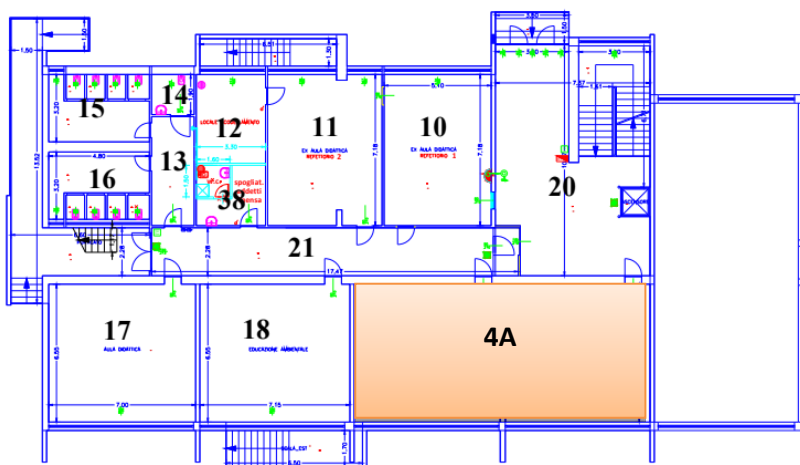
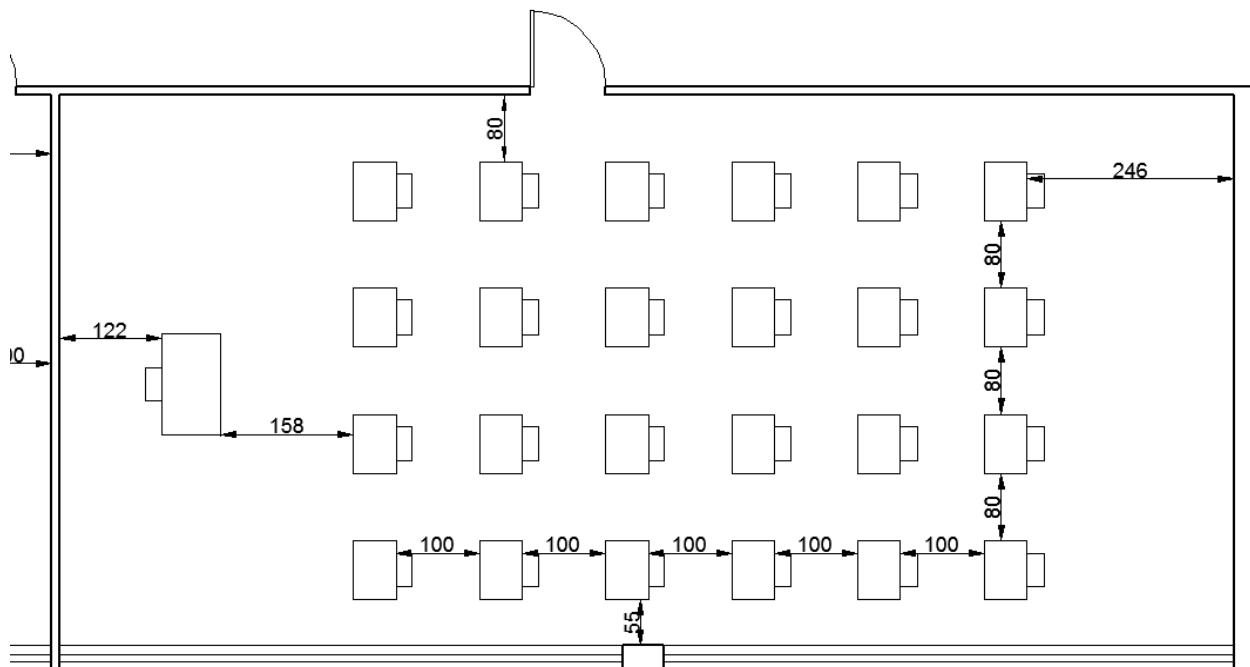
Ingresso / uscita cancello piccolo di via Paperia n°11



SCUOLA PRIMARIA
GRAMSCI
Pianta dell'aula 5A
Piano rialzato

Aula B1= 4A (23 alunni)

Ingresso / uscita cancello piccolo di via Paperia n°11



SCUOLA PRIMARIA
GRAMSCI
Pianta dell'aula 4A
Piano rialzato